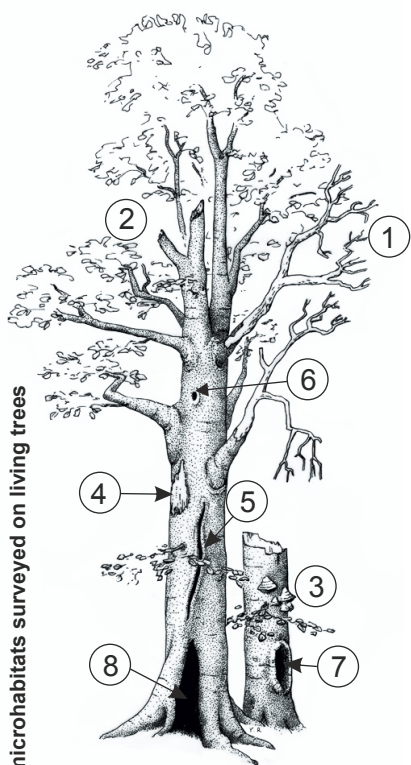


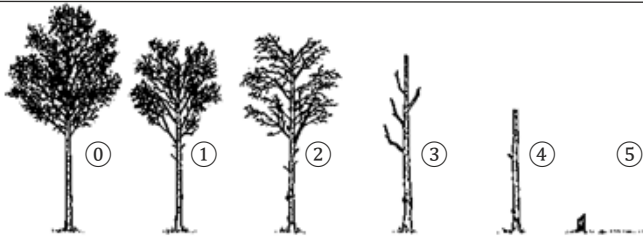
1) Microhabitats



Definitions of the microhabitats surveyed on living trees

- 1 Crown with deadwood $\geq 10\%$ of crown volume
- 2 Broken crown (branches or bole) $\geq 10\%$ of crown volume
- 3 Polypores
- 4 Bark damage (bare wood core) $\geq 300\text{ cm}^2$
- 5 Cracks in wood core $\geq 1\text{ m}$ length
- 6 Hole in wood core with a diameter $\geq 3\text{ cm}$ and a depth $\geq 5\text{ cm}$
- 7 Cavity with mull wood at the stem base below 1.5 m in height
- 8 Hollow stem with a hollow diameter $\geq 50\%$ of tree diameter

2) Class



0	1	2	3	4	5
Live/healthy	Live with defects	Dead	Dead	Dead	Dead fallen
no decay	dead or broken top, dead limbs	most limb intact, some internal rot, top usually broken	most limb gone, top broken, extensive heartrot	top 1/3 or more broken off, no branches	downed trees, coarse woody debris

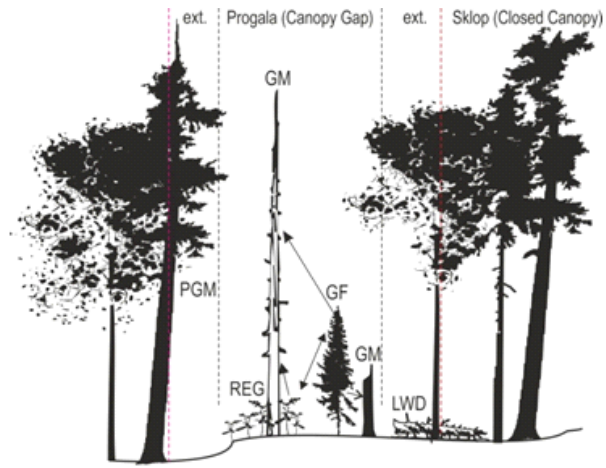
4) Growth pattern (released or suppressed):

- R - Released
- S - Suppressed

5) Layer (which layer tree belongs to)

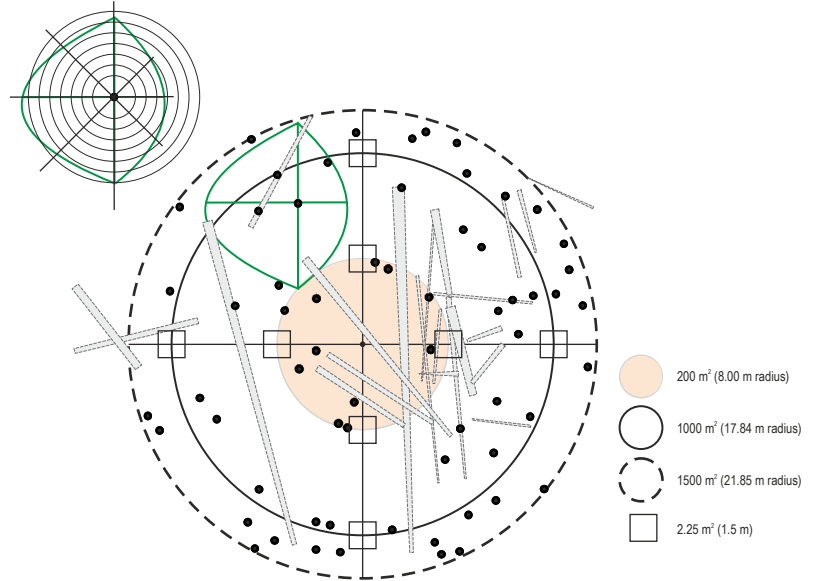
- U - Upper (dominant): - Tree height is equal or more than 80% of the top height
- M - Middle: - Tree height is equal or more than 50% of the top height
- L - Lower

6) Notes



Izgled progale sklopa sa strukturnim obilježjima: GM - Gap Maker, GF - Gap filler, LWD - Lrage woody debris, REG - regeneration, PGM - potential Gap Maker

GF-(DBH > 7.5 cm and < 20 m tall)



Izgled pokusne plohe

3) Death mode

Modes of death and criteria for identification

Code	Mode	Predisposing factor	Grouped Mode	Criteria
1	Standing dead	/	Standing	Standing dead without any of the following criteria applicable
2	Uprooted	/	Uprooted	Uprooted without any signs of root rot
3	Uprooted	root rot	Uprooted & rot	Breakage of the roots at stem basis with signs of rotten wood (brittle breakage)
4	Steam breakage	/	Snapped	Smooth brittle breakage of the stem with fruiting bodies visible
5	Crown breakage	/	Snapped	Smooth brittle breakage of the crown with fruiting bodies visible
6	Steam breakage	wood rot	Snapped & rot	Splinter breakage of the stem
7	Crown breakage	wood rot	Snapped & rot	Splinter breakage of the crown
8	Crushed	/	Crushed	Crushed or pinned by other tree or uprooted with the root collar of a larger tree
9	Disease	/	/	dead leaves, feeding galleries below bark
10	Unknown	/	/	tree could not be found again at or around its known position